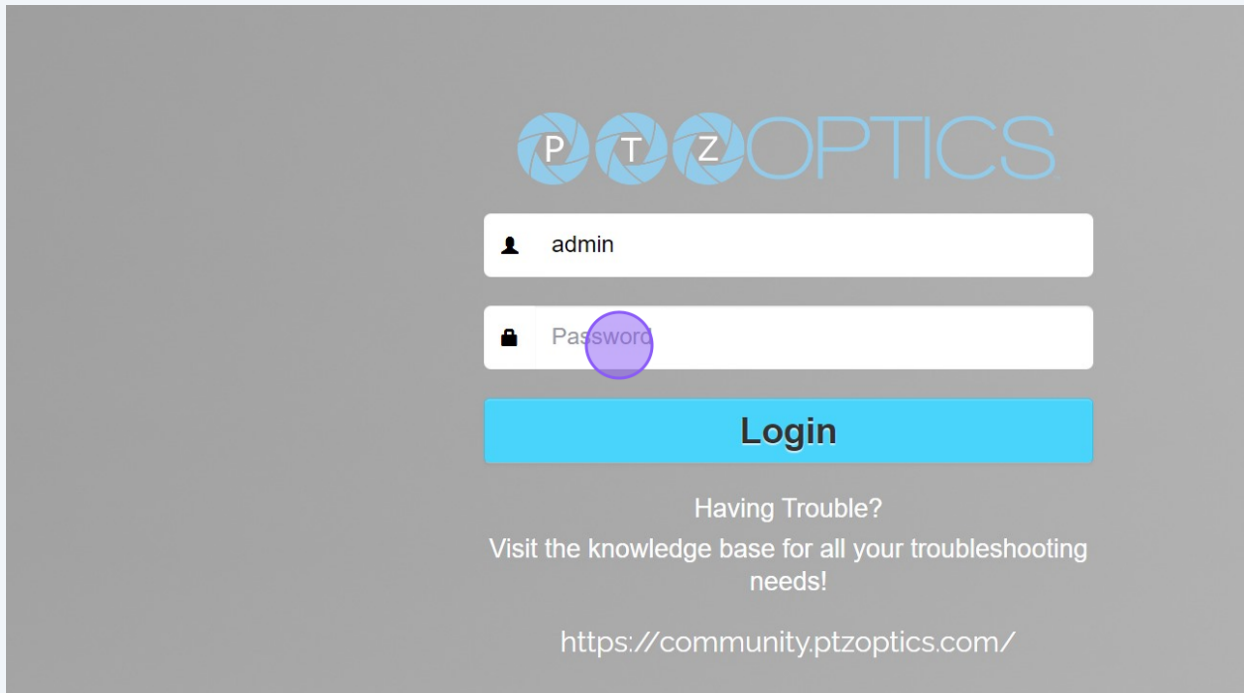


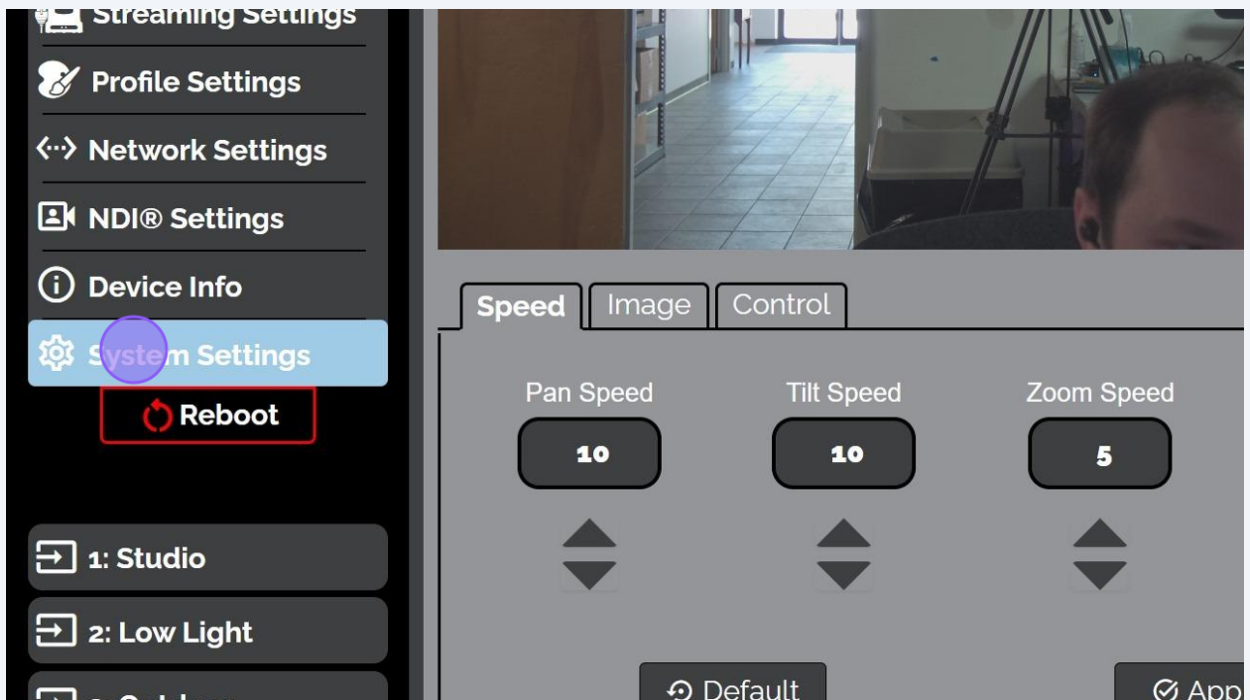
How to Firmware Upgrade

1

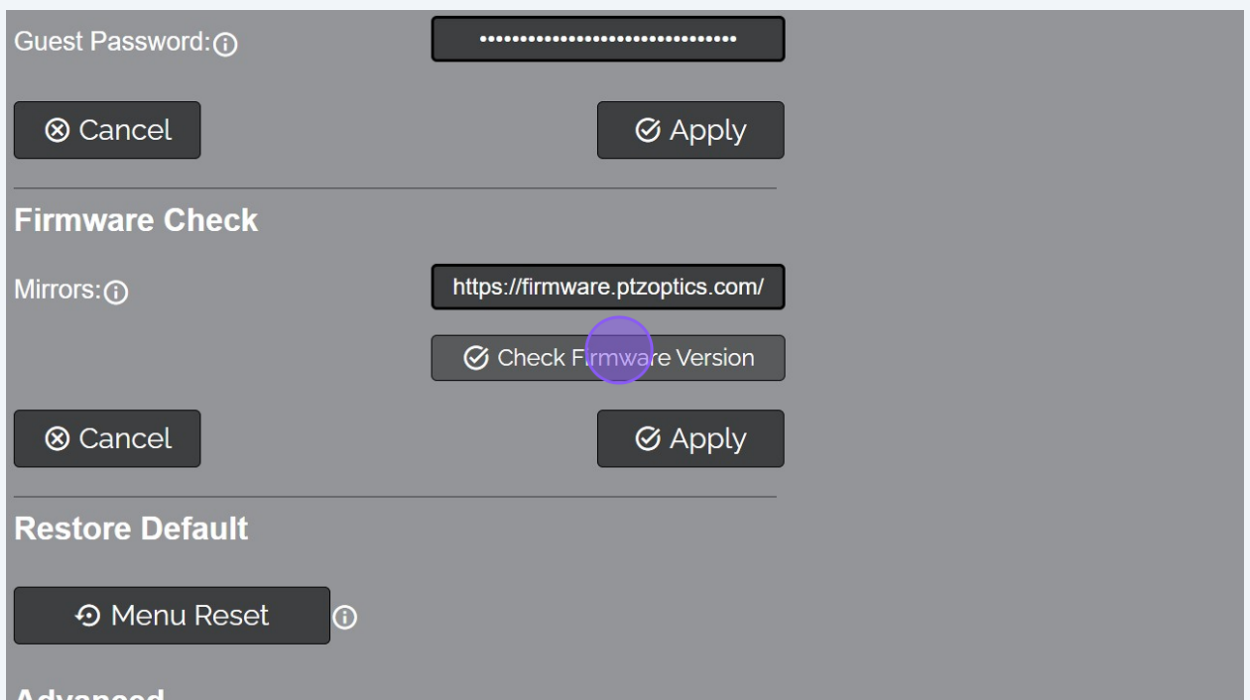
Login to your camera's web interface by typing in its IP address or .local address. For example `http://ptzoptics.local`



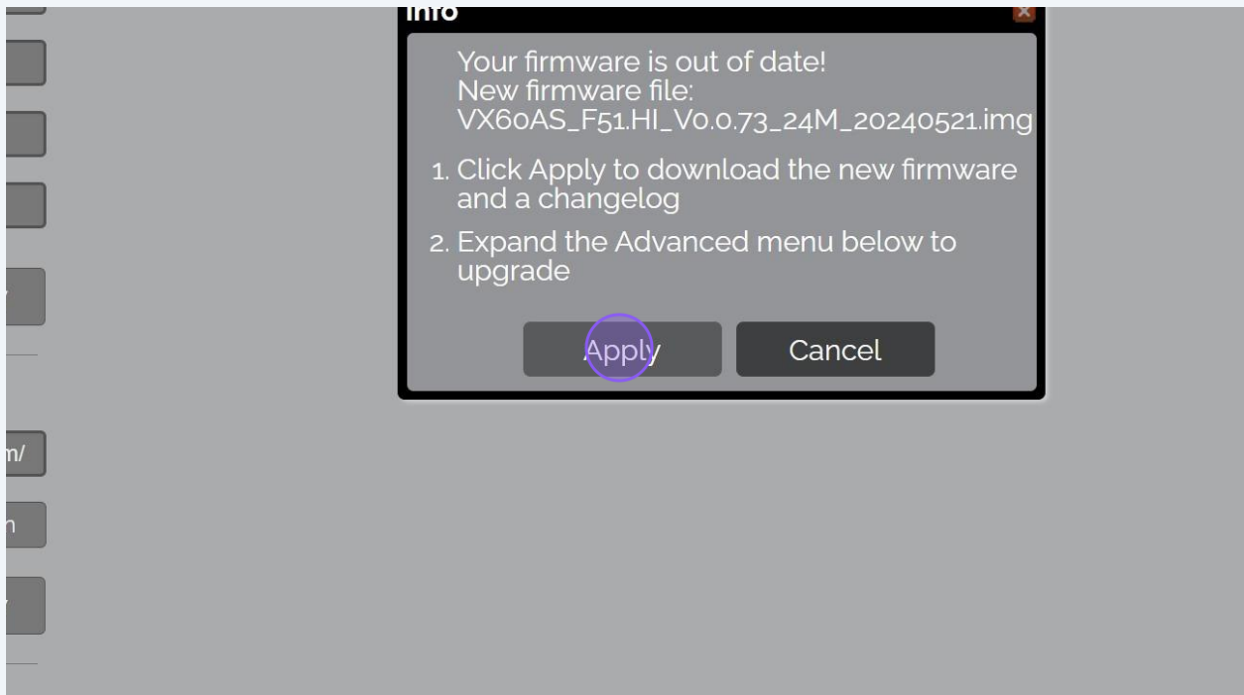
2 Once logged in, go to the System Settings page.



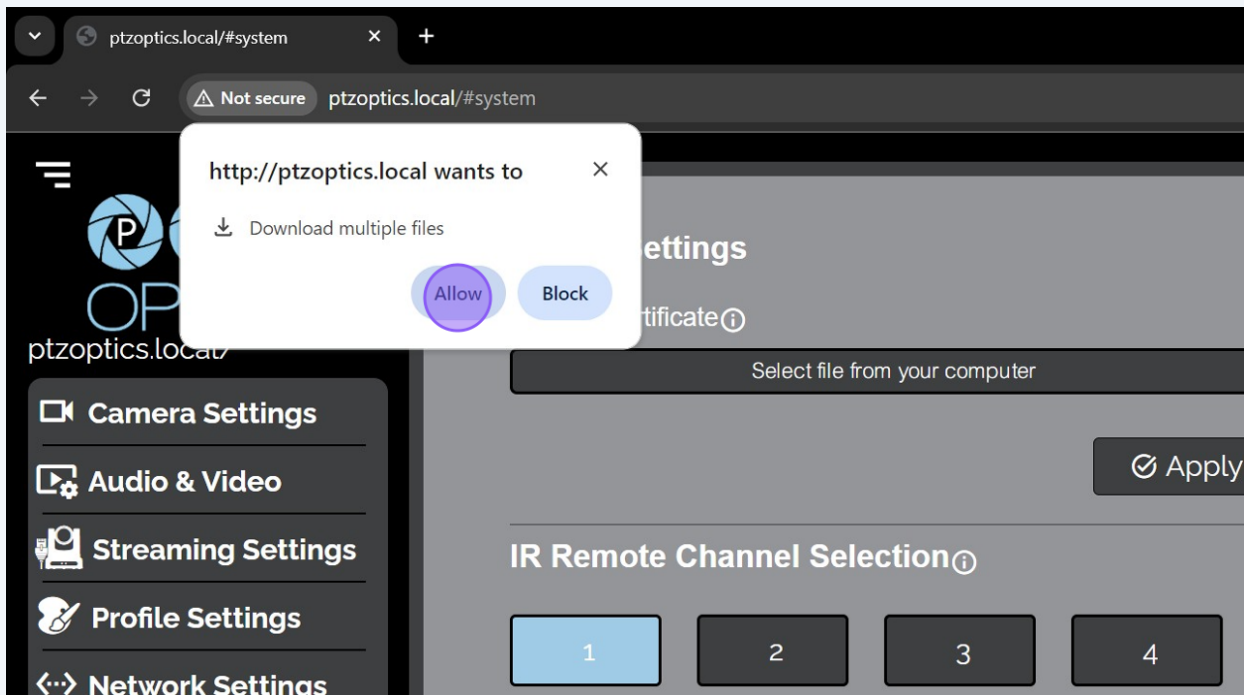
3 Click the Check Firmware Version button.



- 4 Click the Apply button to download the latest firmware file.

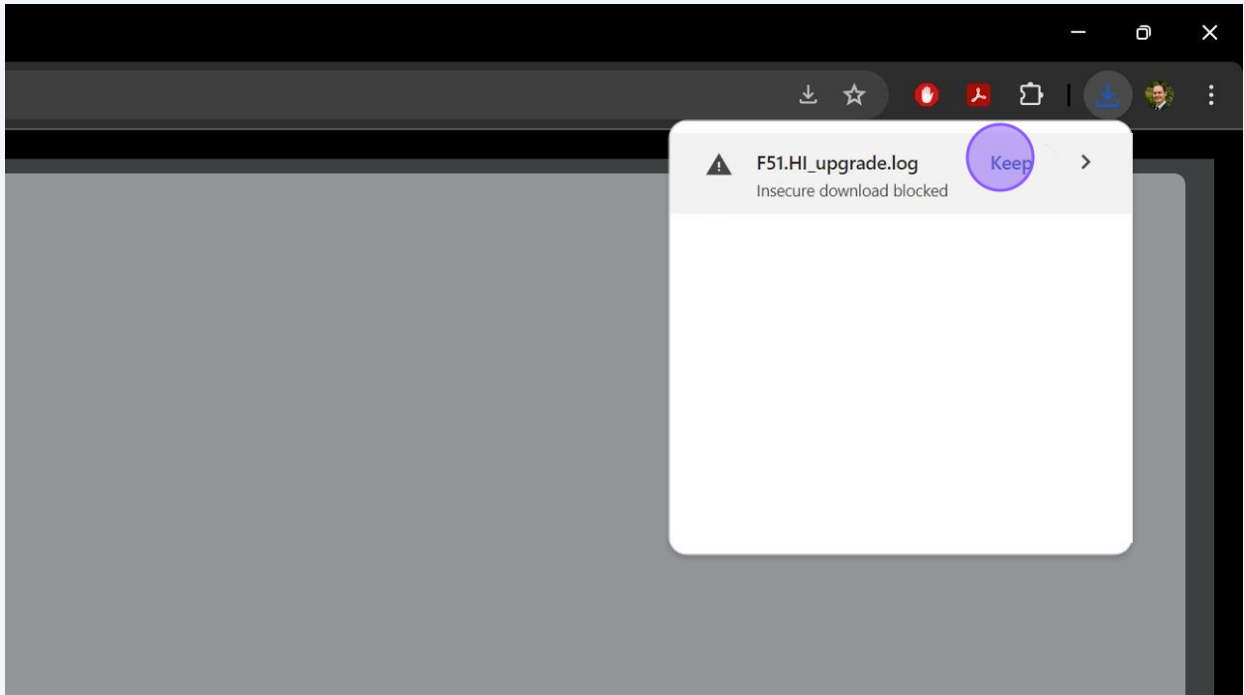


- 5 You may be prompted to download multiple files. Click "Allow" to download the firmware and changelog files.



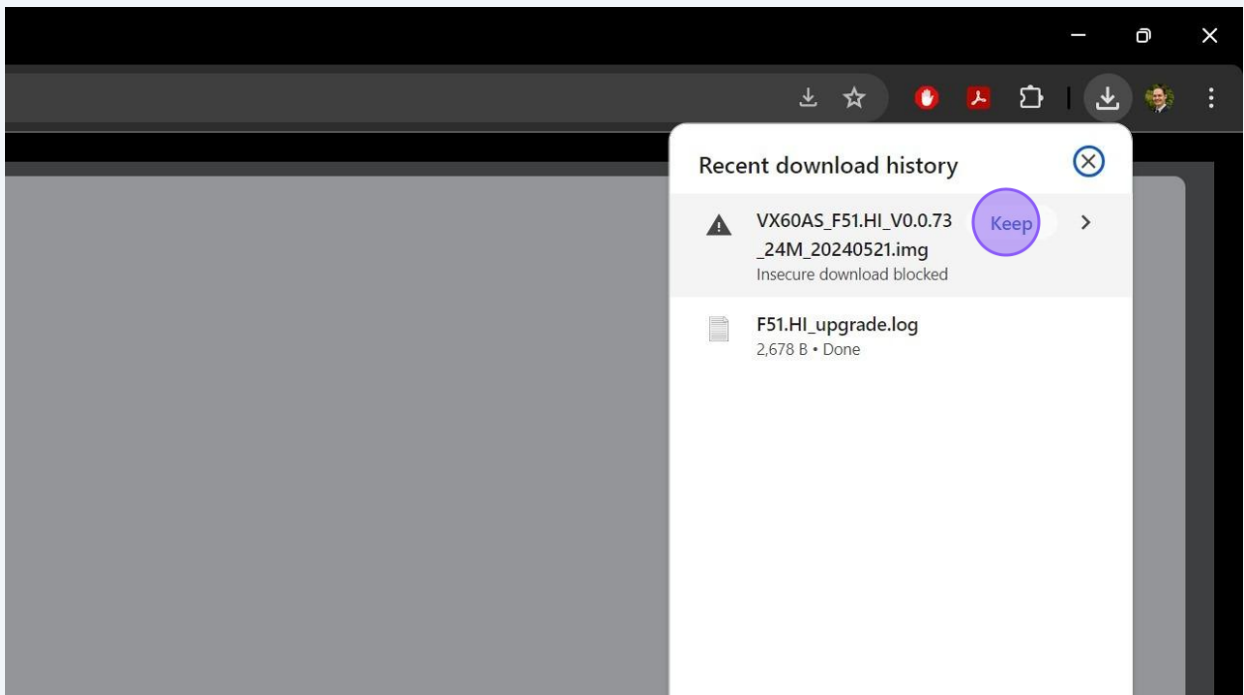
6

You may be prompted to approve the download. Click the Keep button on the changelog to approve the download.



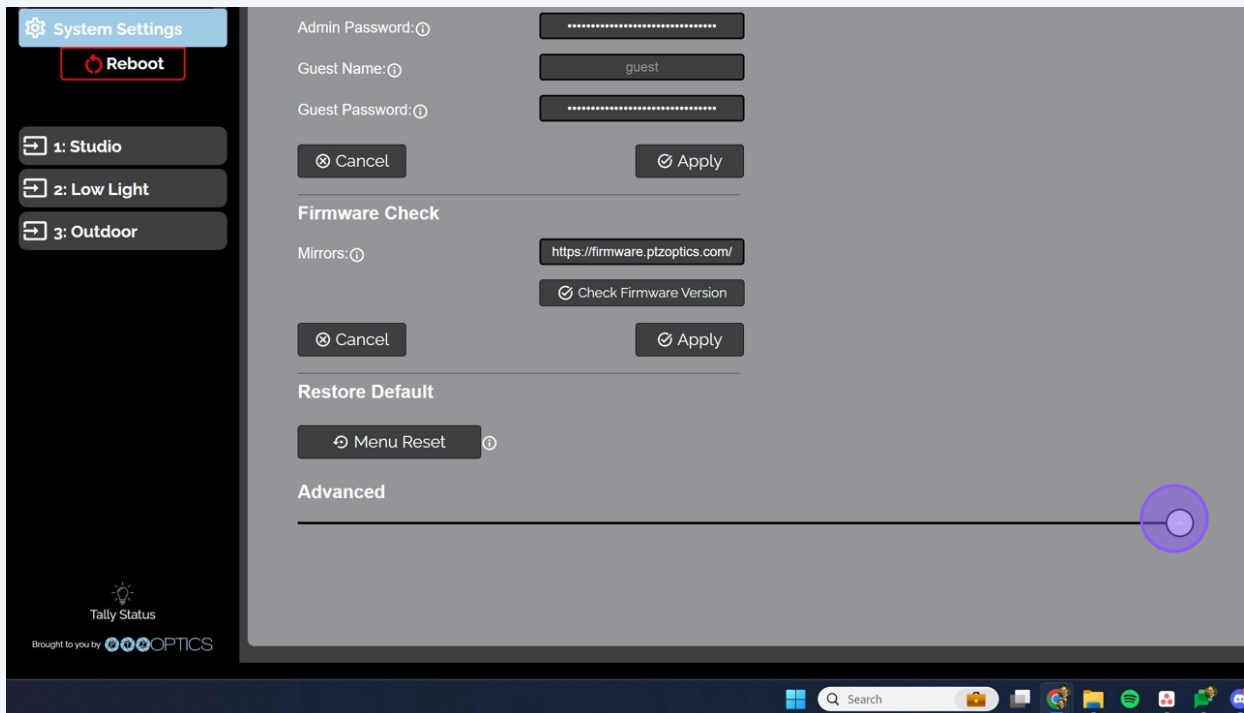
7

Now click the Keep button on the firmware file to approve the download.



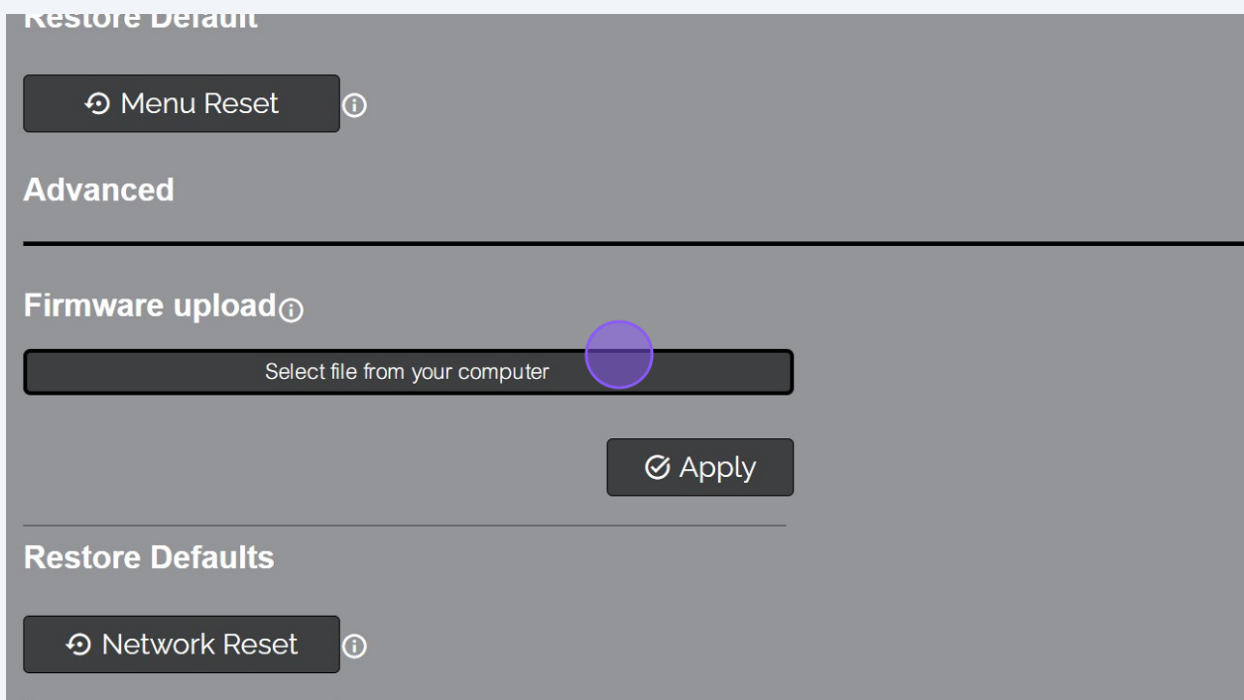
8

Click the arrow to reveal the Advanced section of System Settings.

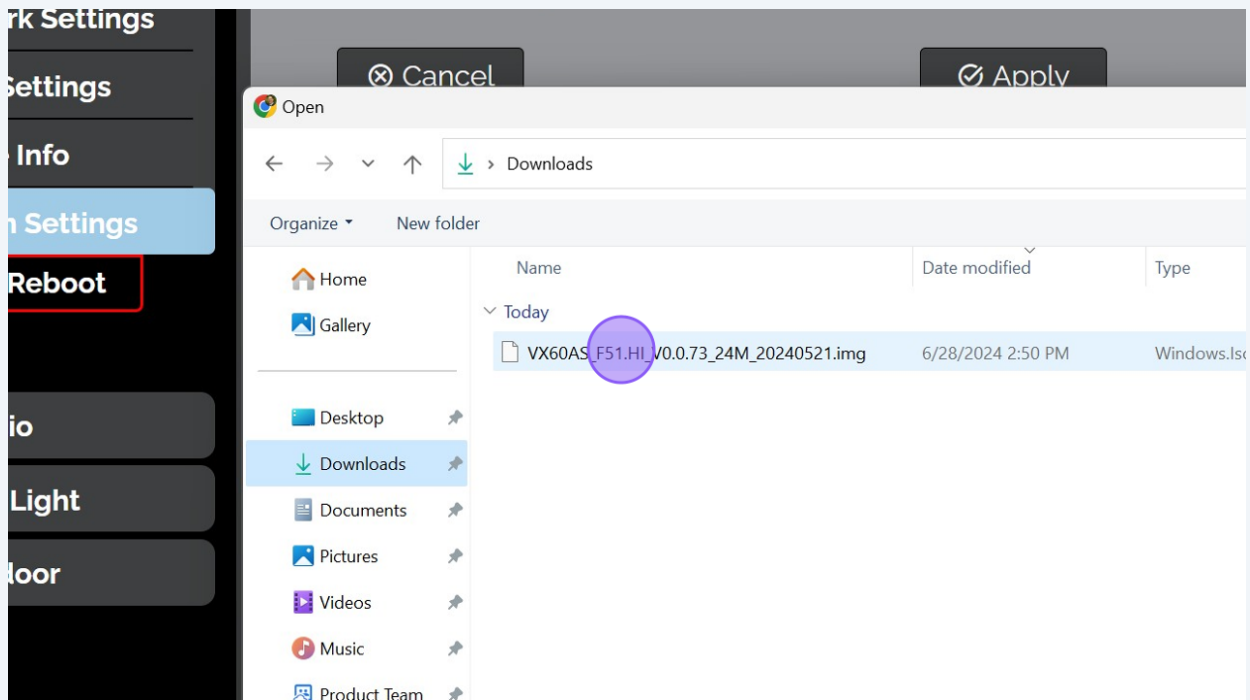


9

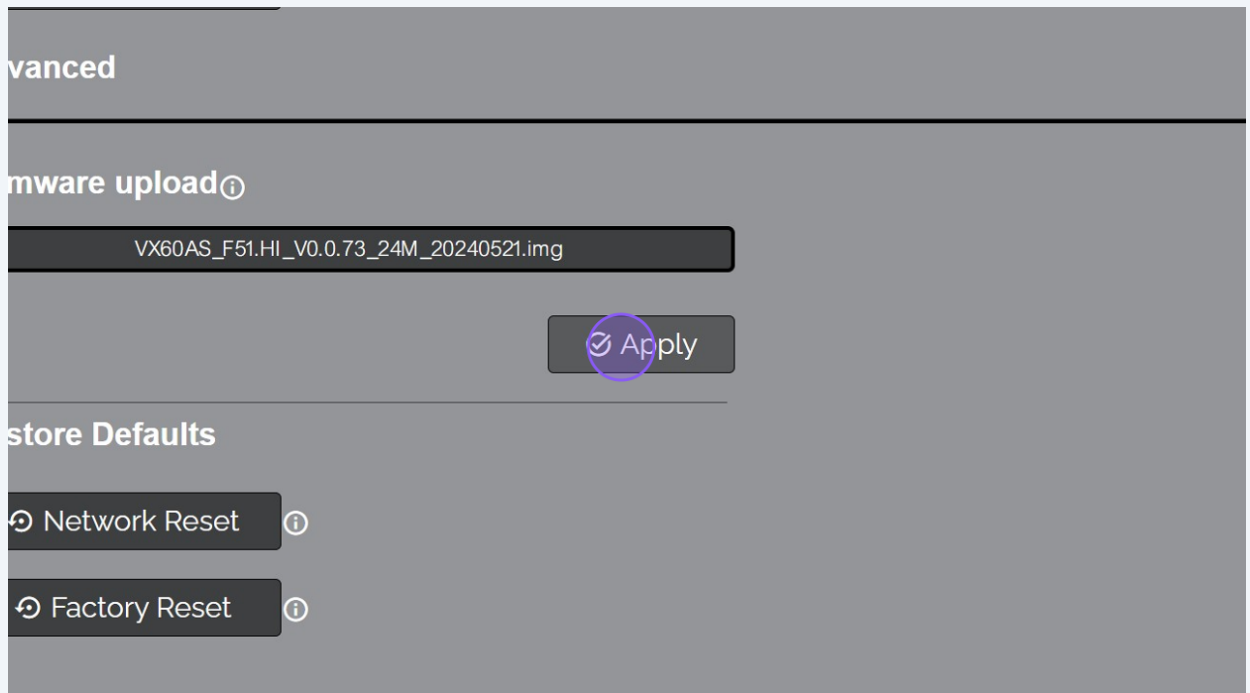
Click the Select File button.



10 Navigate to the Download folder and select the *.img firmware file.

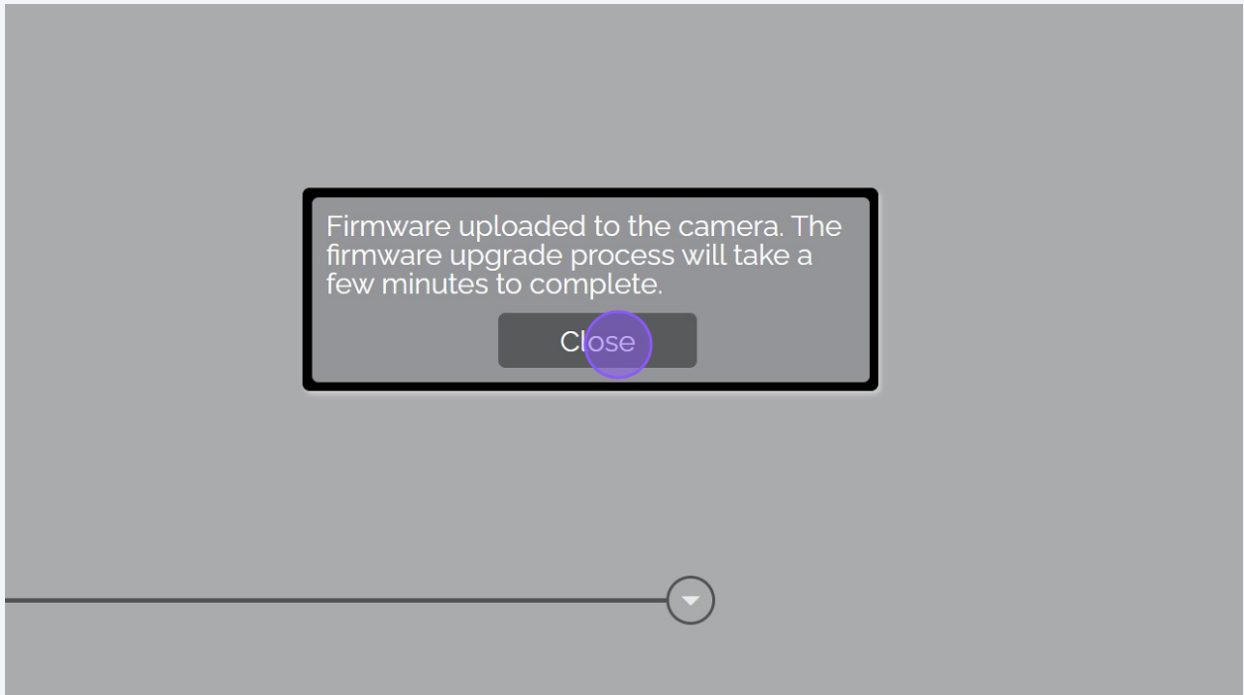


11 Click the Apply button to upload the firmware to the camera.



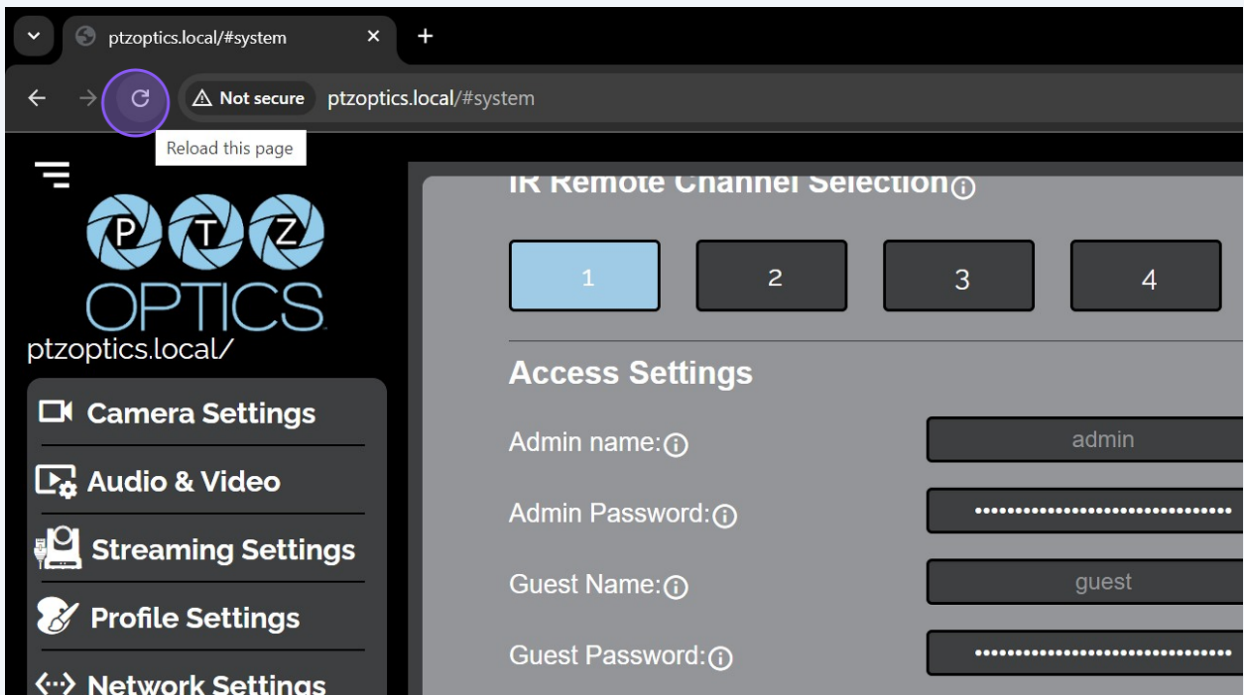
12

In 1 ~ 3 minutes a notification will popup informing you the firmware has been uploaded and will take a few minutes to complete.

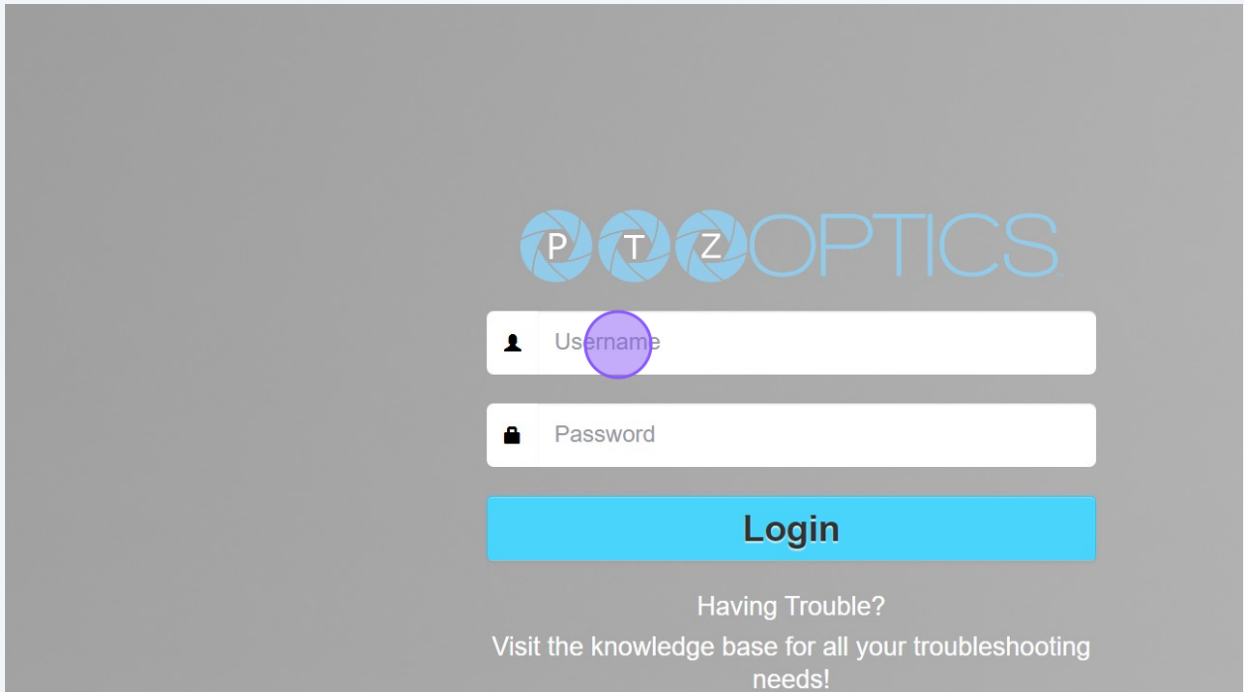


13

After 3 ~ 6 minutes, the firmware upgrade process will be complete. Reload the web interface to reveal the new features.

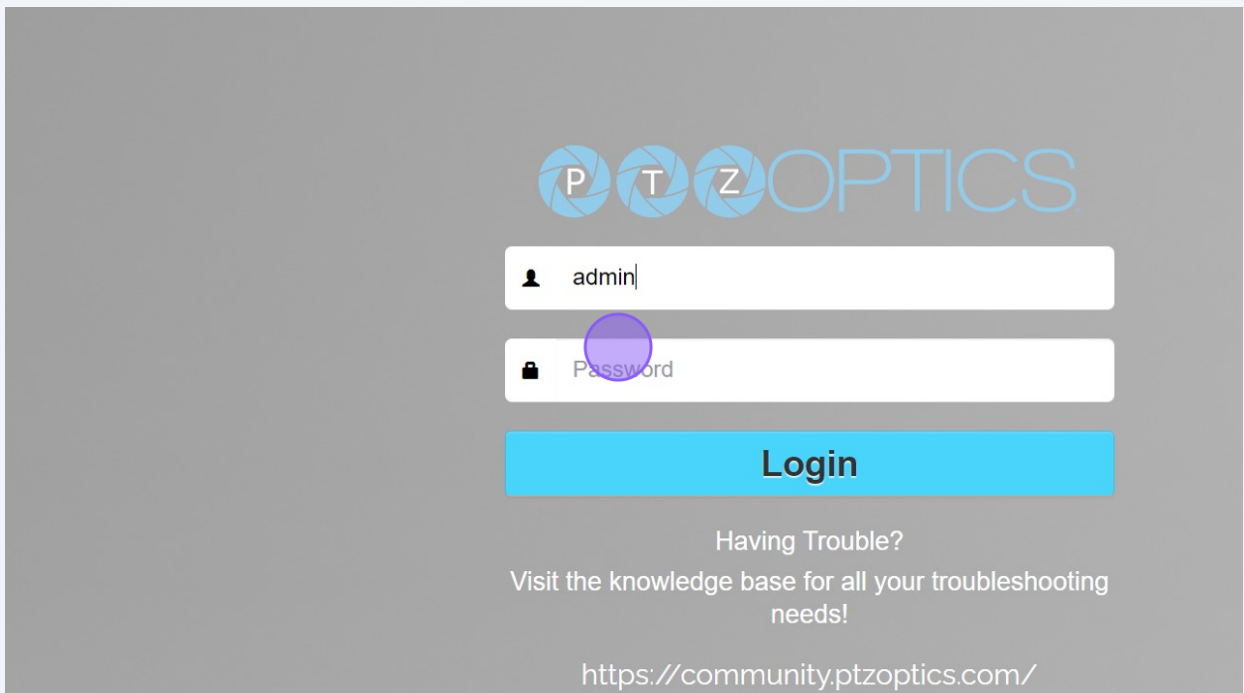


14 Click here



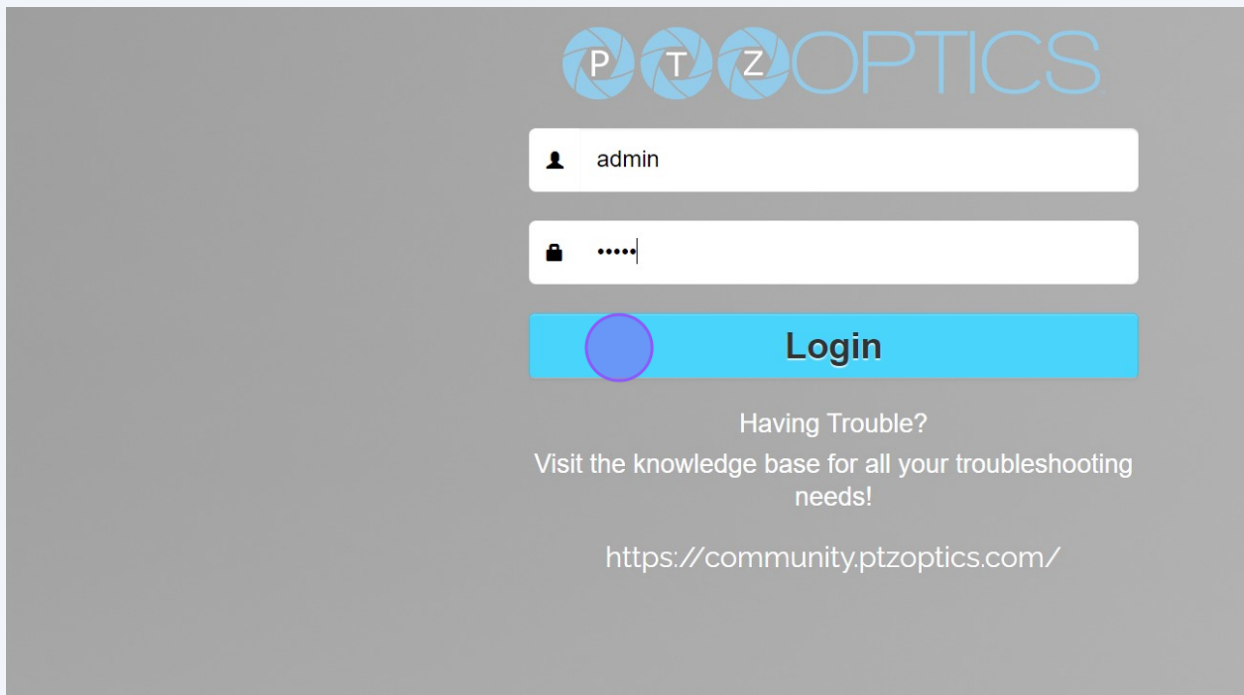
The screenshot shows the PTZ Optics login interface. At the top, the logo consists of three camera lens icons containing the letters 'P', 'T', and 'Z', followed by the word 'OPTICS'. Below the logo are two input fields: 'Username' and 'Password'. A purple circle highlights the 'Username' field. A blue 'Login' button is positioned below the fields. At the bottom, there is a link for users having trouble: 'Having Trouble? Visit the knowledge base for all your troubleshooting needs!'.

15 Click here

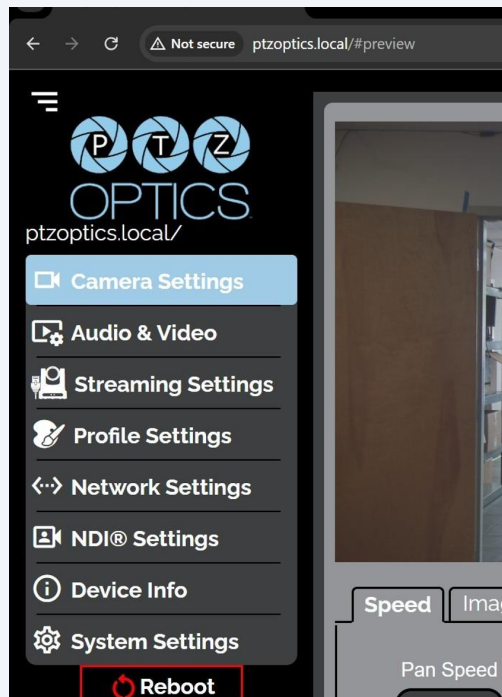


This screenshot is identical to the one above, showing the PTZ Optics login page. However, the purple circle now highlights the 'Password' input field. The 'Username' field contains the text 'admin|'. The 'Login' button and the troubleshooting link remain the same.

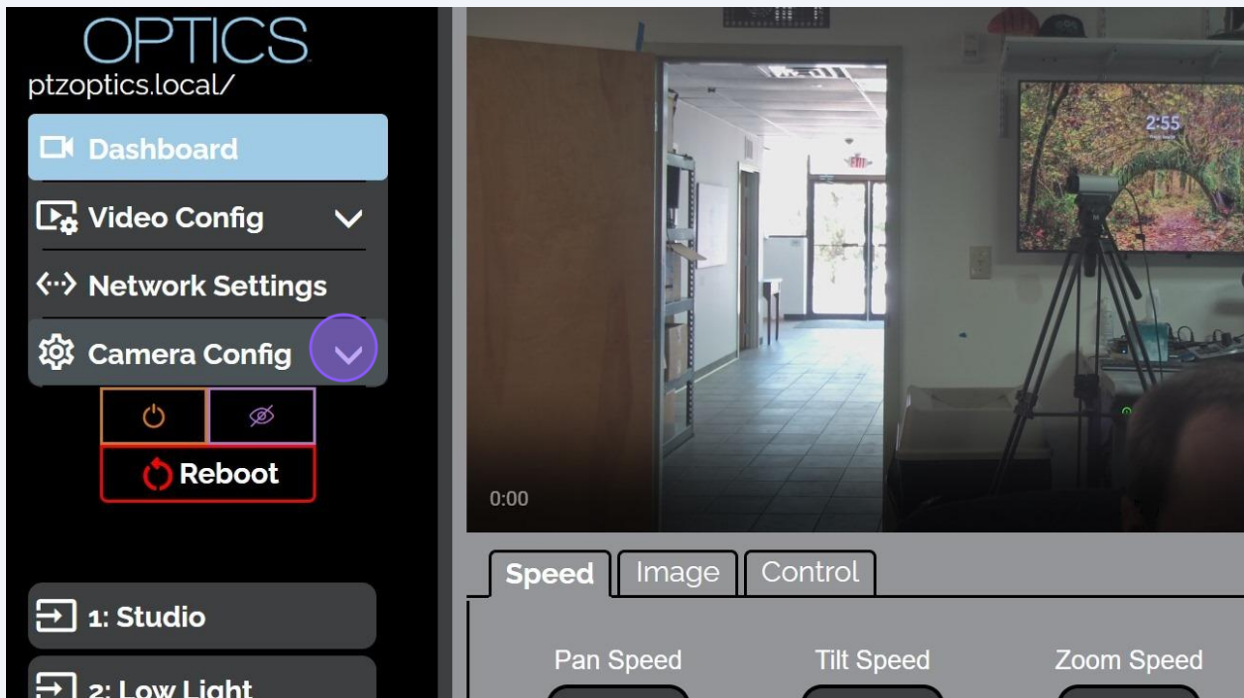
16 Click here



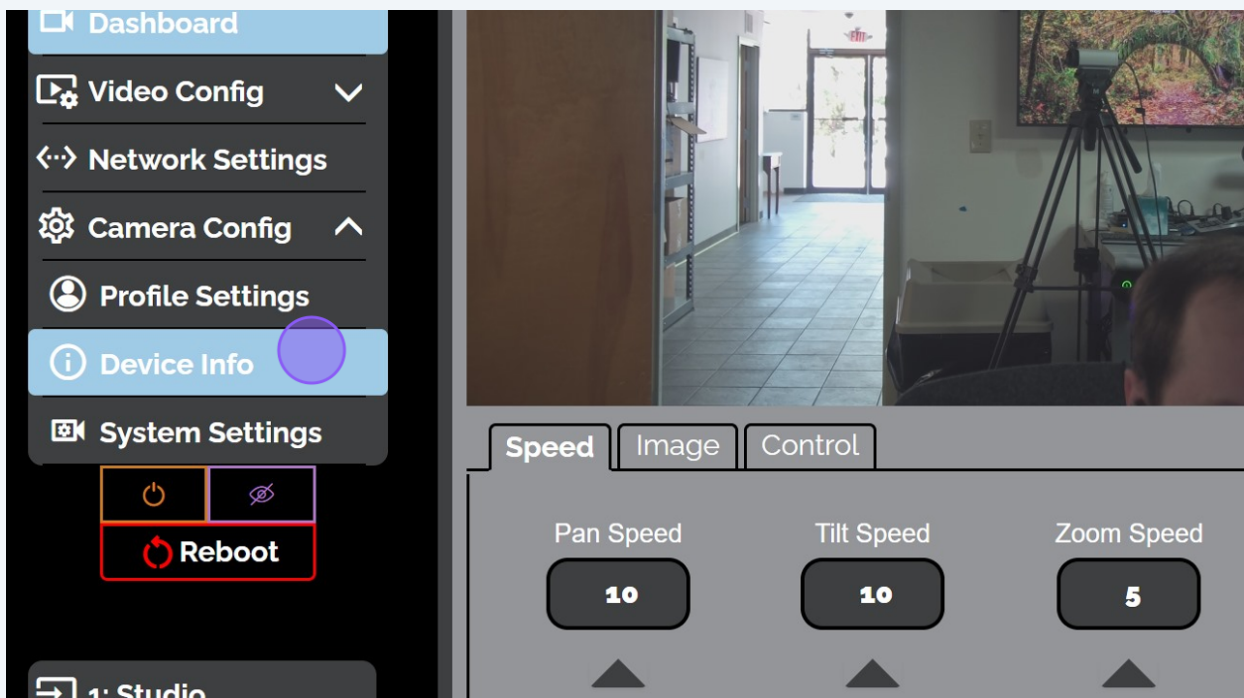
17 Once logged in, press **Shift + Ctrl + R** to refresh the Web UI without cookies / cache.



18 Click Camera Config.



19 Check the Device Info page to confirm that your camera has received the new firmware.



20 View the Firmware Version field for the new SOC version.

Device Information

Device ID: ⓘ .local/

Firmware version: ⓘ

Device model: ⓘ

Webware Version: ⓘ

Serial number: ⓘ

Need Help?