

PTZOptics IP Controllers

Designed for PC, Mac and OBS (open broadcaster software)

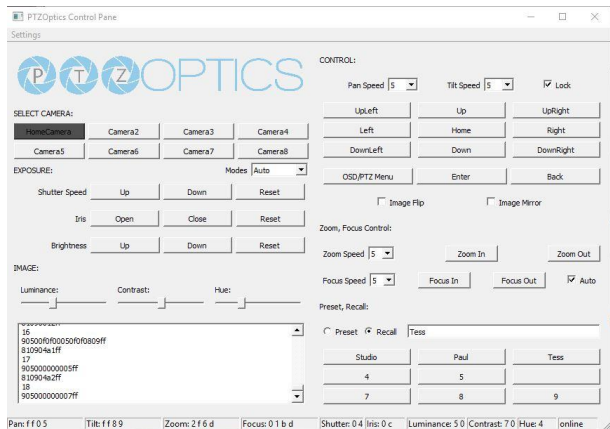
Control up to 8 cameras with advanced features for video production and conferencing applications



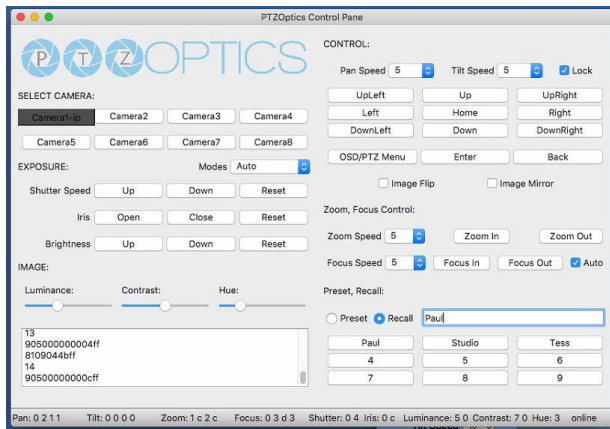
PTZOptics | 152 Robbins Rd | Downingtown, PA | 19335 USA | PTZOptics.com

Available For These Platforms

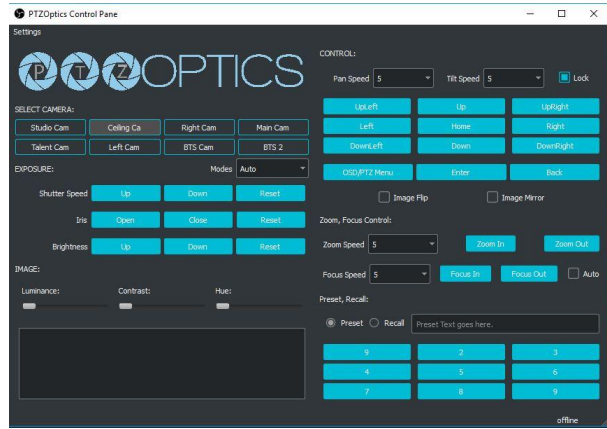
PC, Mac & OBS



Windows 10 64bit



Mac OS High Sierra



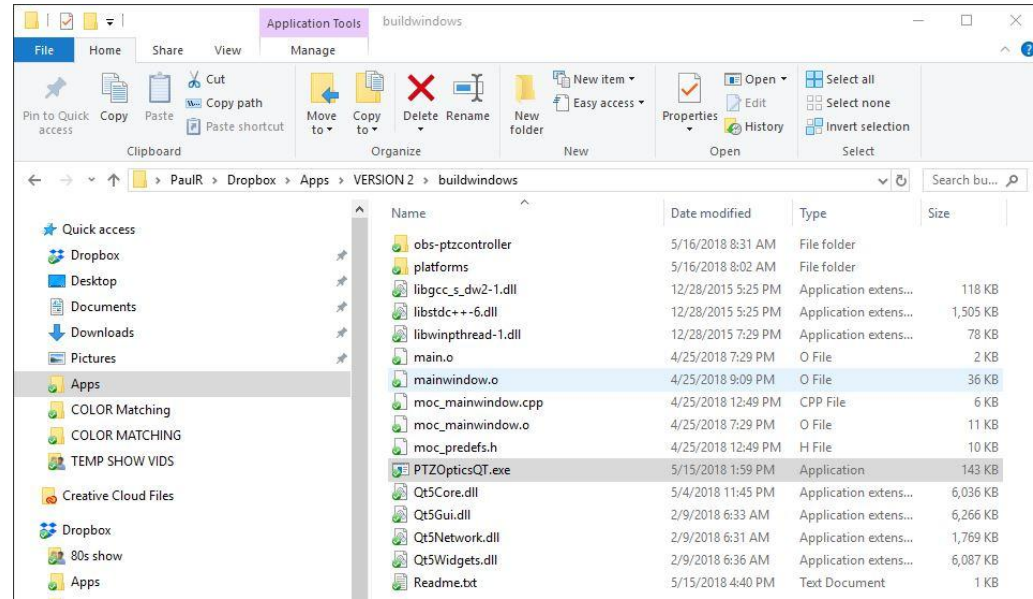
**Windows 10 64bit
OBS 21.1 or higher**

PC Installation

Windows 10

Unzip the program and put into your preferred program folder.

To launch the app simply open “PTZOpticsQT.exe”.



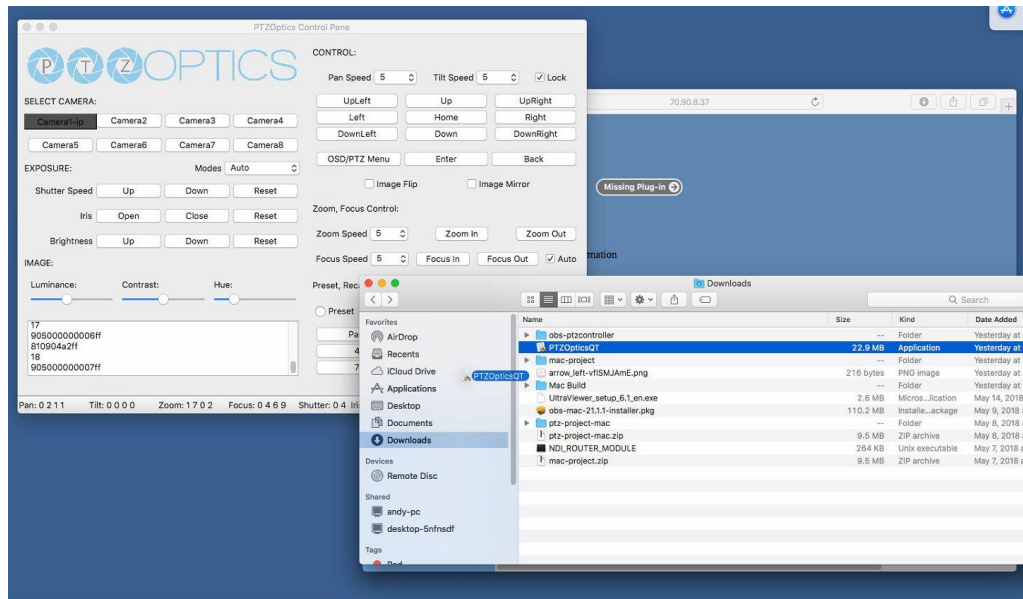
Mac Installation

Mac OS 10 High Sierra or later

Download the app into your download folder.

Drag program file “PTZOpticsQt” into your applications folder.

Simply open by double clicking the file.



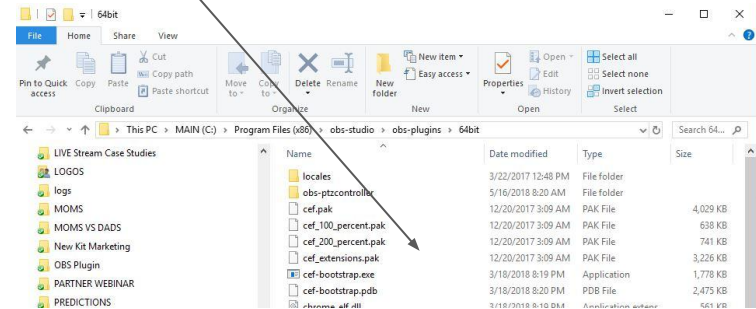
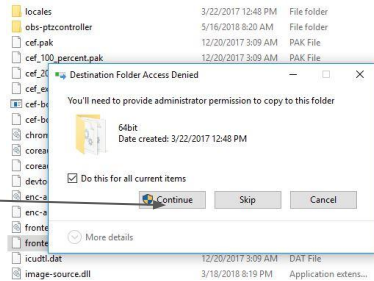
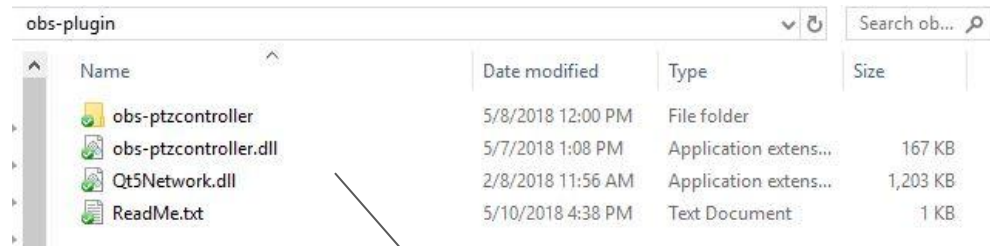
OBS Installation

Windows 10 64bit - OBS 21.1 or later

Unzip application and put onto your computer.

**Copy all files except the readme into
Main (C:) > Program Files (x86) >
obs-studio > obs-plugins > 64bit**

Continue in Administrator Mode.



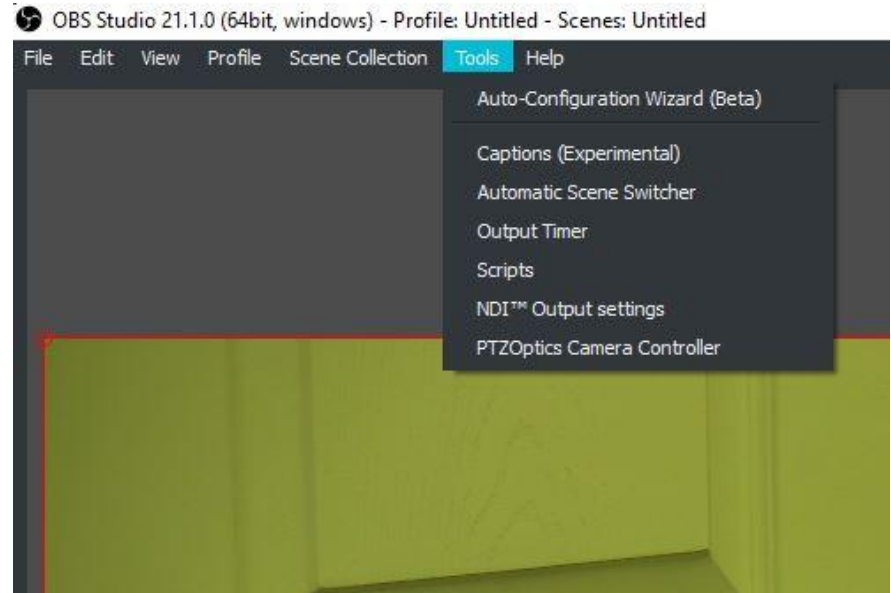
OBS Installation

Windows 10 64bit - OBS 21.1 or later

Open OBS 21.1 or later.

**Open PTZ controller from “Tools”
dropdown menu.**

This will open the camera controller.

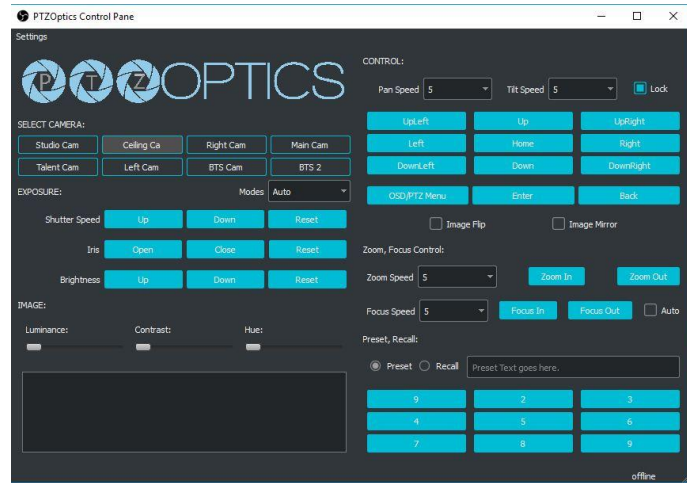
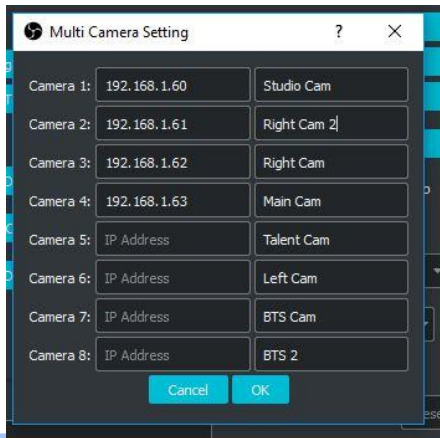


App Features

PC, Mac & OBS

Setup your cameras in the settings area.

Start by naming each camera and entering the IP addresses.



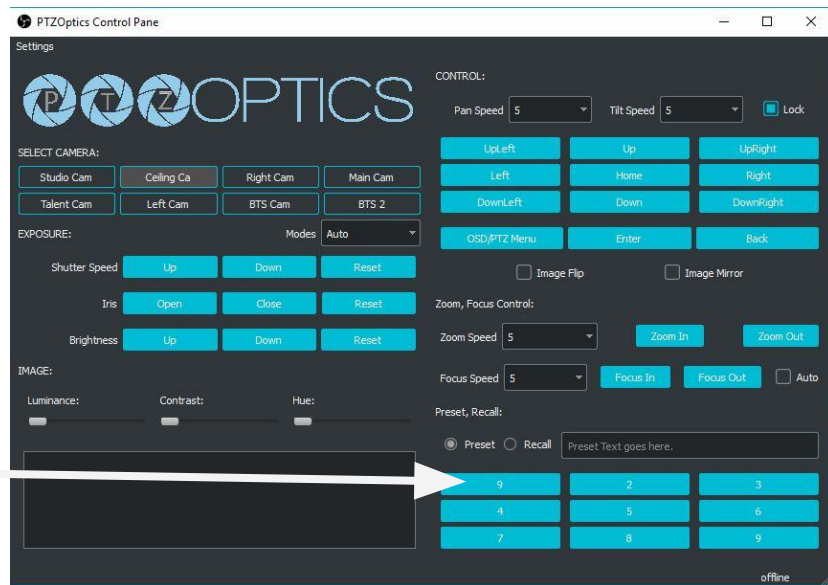
App Features

Connecting to your camera

To connect to a camera simply select the camera by clicking it. It will turn a different color from other cameras.

You will see commands being sent to the camera and you can now take control for PTZ.

The app features many advanced functions. You can set presets and recall exact PTZ positions here.



App Features

Exposure modes

The PTZOptics cameras offer multiple exposure modes for improving the camera image. Keep in mind that not some settings may be fixed in various exposure modes. Below is a list of functions based on exposure modes.

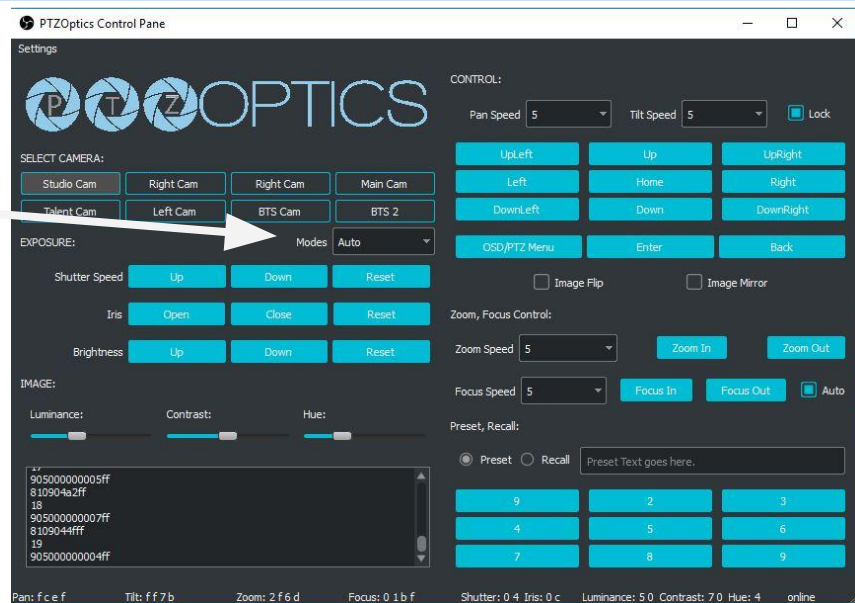
Auto - IRIS, SHUTTER and BRIGHT are all DEactivated

Manual - IRIS and SHUTTER are activated, BRIGHT is DEactivated

SAE - SHUTTER is activated, IRIS and BRIGHT are DEactivated

AAE - IRIS is activated, SHUTTER and BRIGHT are DEactivated

Bright - BRIGHT is activated, IRIS and SHUTTER are DEactivated

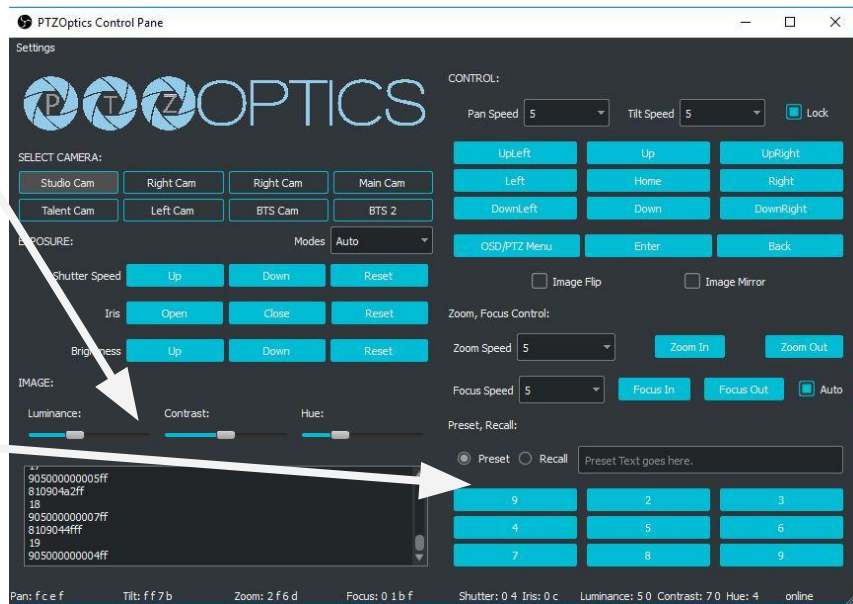


App Features

Image Modes

You can also adjust your cameras image with slider bars for Luminance, Contrast and Hue.

You can set up to 9 presets per camera. To set a preset, make sure you have the “preset” radio button enabled and type in the name into the text box. Then click the preset. Once you have named a preset you can use the “recall” radio button to recall presets.



App Features

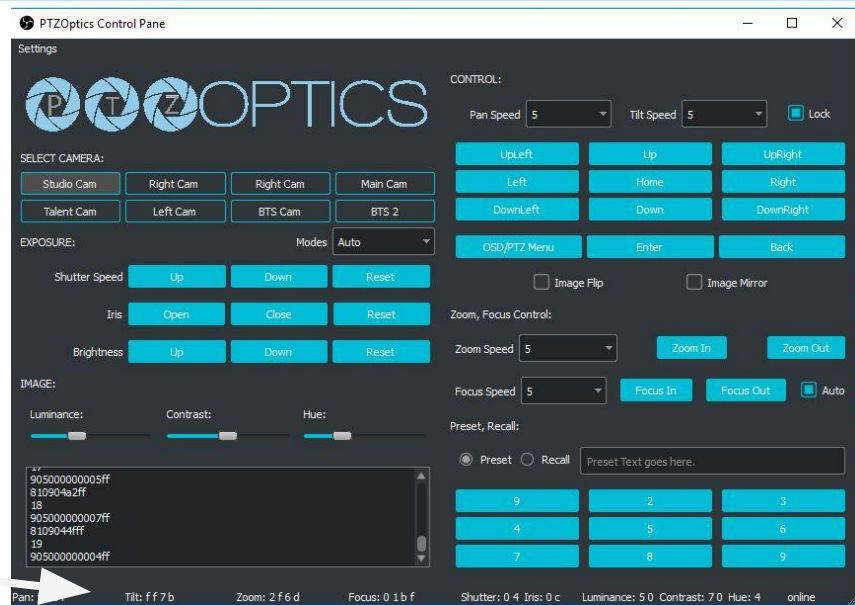
Additional Features

Additional advanced features include the ability to adjust and lock pan/tilt speeds.

You can flip or mirror the camera's image.

You can also adjust focus and zoom speeds. With the ability to manually adjust focus.

Finally, this program will represent the cameras current settings in the status bar at the bottom of the application.



Download this app

PTZOptics.com/Apps

The latest version of these applications will always be available for download at the following locations.

<https://ptzoptics.com/apps>



PTZOptics | 152 Robbins Rd | Downingtown, PA | 19335 USA | [PTZOptics.com](https://ptzoptics.com)