

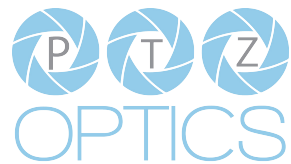
PTZOptics iOS App Setup Guide

iPhone, iPad & iPod Touch Compatible

Requires iOS 8 or higher



PTZOptics | 152 Robbins Rd | Downingtown, PA | 19335 USA | PTZOptics.com



App Setup

Connecting to your PTZOptics Camera

Setup Process:

Step 1 – Determine your camera's IP Address. This can be done by searching your network with the [IP Address Settings Tool](#) (Instructions for IP Address management on next page)

Step 2 - Connect your PTZOptics camera to the same network as your iOS device. Your iOS Device should be connected to the WiFi and the PTZOptics camera will be connected via ethernet.

Step 3 - In the settings panel, enter your camera's IP Address.

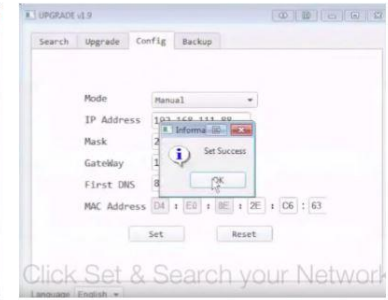
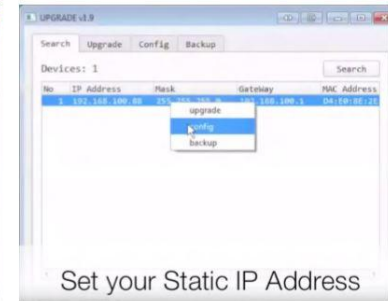
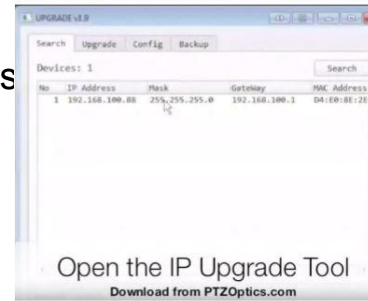


Setting a Static IP Address

Required for using multiple cameras on the same network

1. Download the IP Address Settings tool from <http://ptzoptics.com/downloads>
2. Open the upgrade.exe application
3. Search your network for your camera
4. Right click the camera and click “config”
5. You can now edit that IP Address and click Set
6. “Set Success” should show as a pop up
7. You can now search your network again and see the camera as with a new IP Address.

[Download the IP Address Settings Tool Here.](#)



App Feature Overview

iOS App for iPhone & iPad Devices

Top Features

- Easy Wireless Camera Control over WiFi
- Control up to four cameras
- Store up to ten presets per camera
- Variable Speed Control w/ Joystick
- Support for Zoom & Focus
- Supports iPhone, iPad and iPod touch

Compatibility: Requires iOS 8.0 or later. Compatible with iPhone, iPad, and iPod touch.



FAQ

Frequently Asked Questions

How many cameras can I use?

Four. Each camera must have a unique IP Address.

Can I control pan and tilt simultaneously with PanTiltZoom?

Absolutely! Move the joystick in the direction you want the camera to move and it will pan and tilt simultaneously. Thanks to multi-touch you can also control the zoom simultaneously.

How do I move the camera faster?

The “joystick” control is variable speed. The further you move it away from the center, the faster the camera will pan or tilt.

How do I switch cameras?

On the iPad, the camera buttons in the center of the interface. The active camera will be green in color. Tap the button for the camera that you want to switch to.

FAQ Continued

Frequently Asked Questions

How do I save a position for recalling later?

Saving a position is easy!

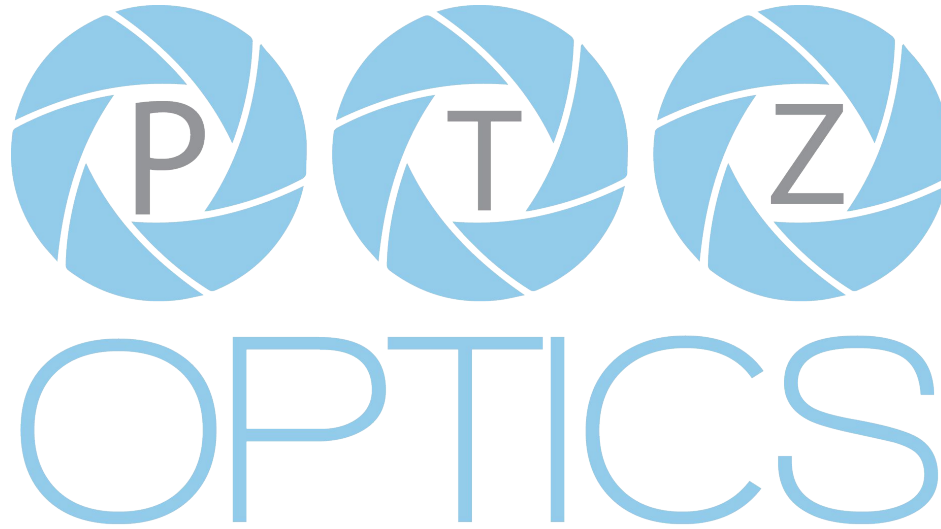
1. Position the pan, tilt and zoom position you want using the manual controls.
2. Press the “Set” button
3. Press the button that you want to save the position to
4. When prompted to save, you can optionally change the name of the button by tapping the field with the button name
5. Press “Save”

How many positions can I save?

The App can save up to 10 positions for each camera.

Do the saved positions overwrite my camera's saved presets?

The App stores the saved positions internally to the app without overwriting the cameras stored presets.



Download app on the App Store [here](#).